

VISION+LITE LED Ceiling Light

IP65 - 160lm/w Low Bay with Samsung LED

VZC-HB06

IP65 | **CRI 80**



Power Wattage: 100W / 150W / 200W / 240W

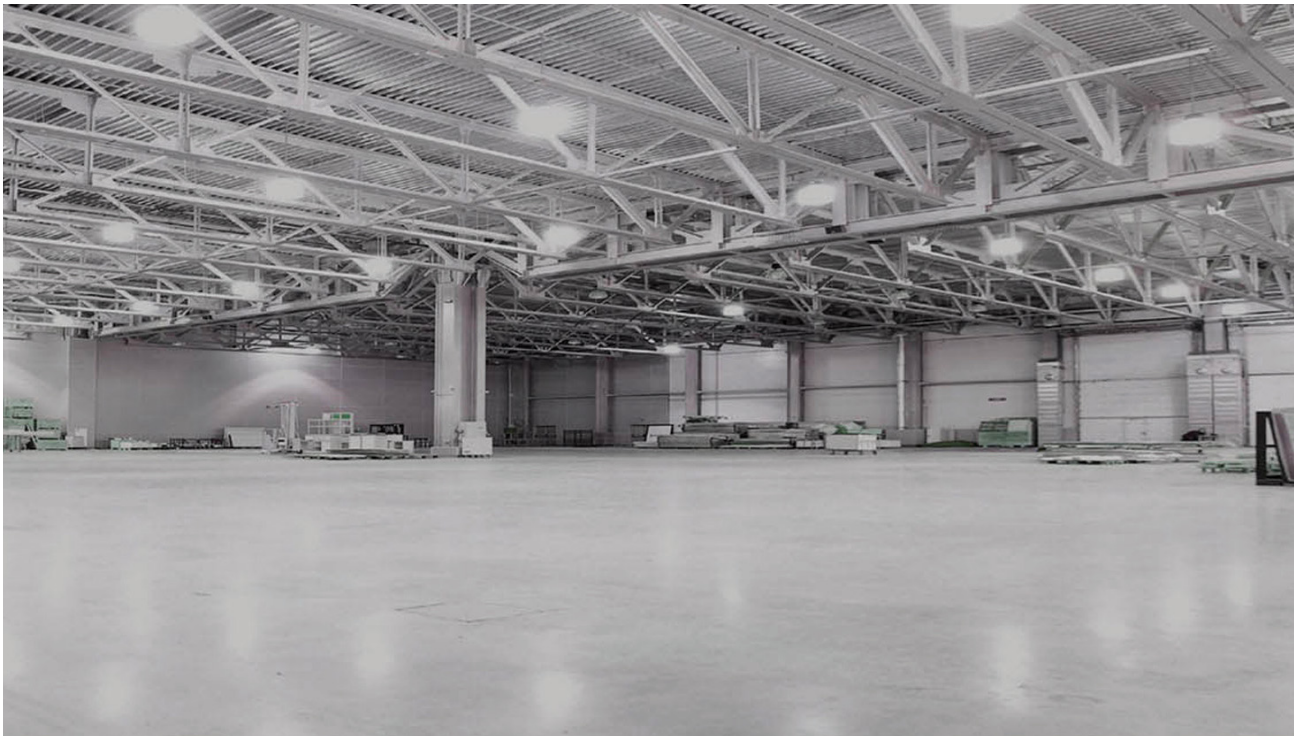
Lamp Source	: SAMSUNG LED
Voltage Input	: AC100 - 240V
Color Temperature (CCT)	: 3000K/4000K/6000K
Beam Angle	: 110°
Luminous Flux (lm)	: 32377 (200W)
Lumens per Watt	: 160.35 lm/w
Dimension	: Ø mm (100w)
	: Ø mm (150w)
	: Ø mm (200w)
	: Ø mm (240w)

Features

- 160lm/w efficacy
- Power: 100-240W
- ADC12 materials die-casting aluminum and its fin heat sink design make the high bay light with good heat dissipation
- Waterproof IP65 design, suitable to damp & wet location
- Lighter weight and smaller volume can help the customer save freight cost

Application

- Warehouse & logistics
- Factory Workshops
- Sports Facilities
- Manufacturing
- Loading bays
- High-ceiling retail
- Commercial foyers & high-ceiling interiors



Ordering Code: VZC-HB06 - **XXW - **ZZZ****

Example: **VZC-HB06-200W-840**

XX = (Watt) e.g. 100W, 150W, 200W, 240W...

ZZZ = the code for color rendering and color temperature, eg. **827** = CRI >80 and CCT - 2700K; **830** = CRI >80 and CCT - 3000K; **840** = CRI >80 and CCT - 4000K